



# Design2Fab<sup>®</sup> 5

3D SHEET METAL DESIGN, LAYOUT, AND ESTIMATING SOFTWARE

## Power made simple

Design2Fab is a flexible, easy-to-learn and easy-to-use solution for creating HVAC duct, mechanical, kitchen, industrial, roofing or specialty fitting layouts. Engineered to dramatically reduce the time it takes to develop and lay out flat patterns, Design2Fab is known for its superb versatility. You can create complex custom fitting layouts in minutes, not hours! Design2Fab provides you with the ability to create HPGL and DXF output formats. You can use a plotter to print the HPGL layout for manual cutting by hand or use a CNC cutting machine to produce fittings from the DXF files. Prior to CNC cutting, DXF files may be exported to NestMaster™, TurboNest® or ProNest® nesting software for optimal material utilization.

## Manual layout

Simply enter the fitting's dimensions and get a complete set of layout points, including blank and pattern measurements. Make complex or simple fittings in the same amount of time! Design2Fab is so easy to use, even a beginner to the sheet metal trade can immediately start making fittings!

## Estimating

Design2Fab accurately computes costing for the entire job including material, labor, fabrication, installation, and accessory costs (dampers, diffusers, fans, hangers, insulation, etc.) based on SMACNA standards and your company's labor rates. The unique single-entry system saves you time and eliminates errors since you enter your data once for both estimating and layout.

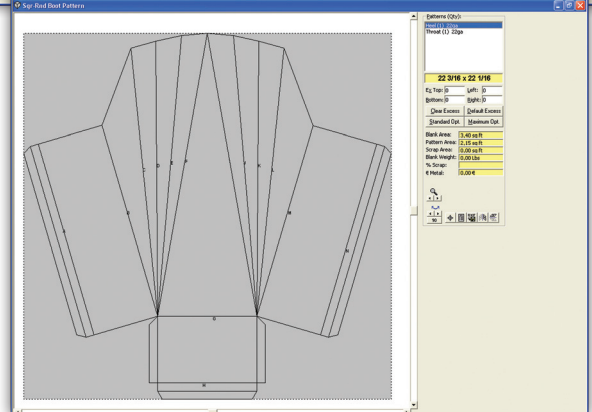
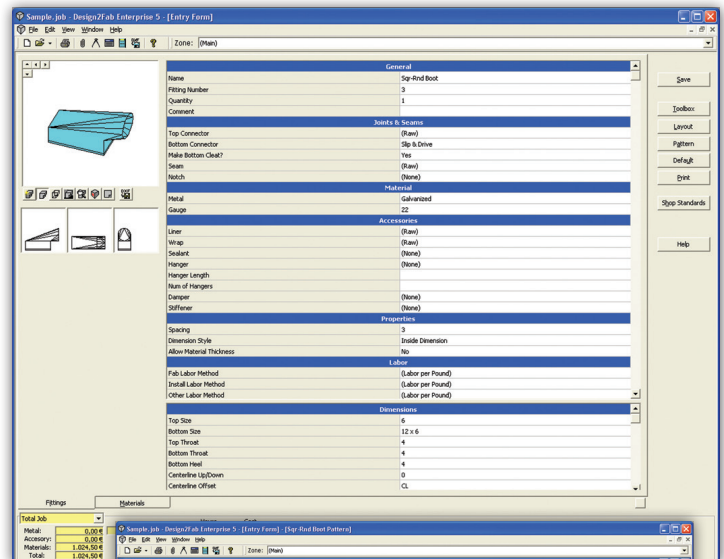
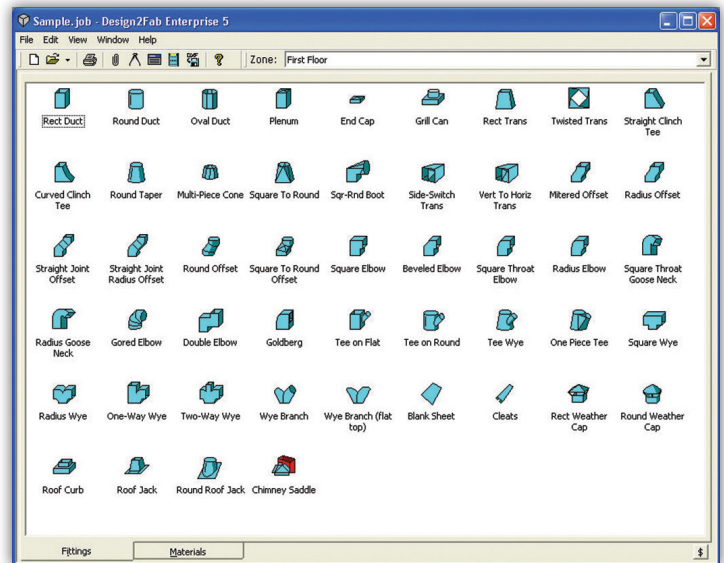
## Increase profits

Design2Fab applies your labor rate and markup to detailed cost data allowing you to confidently bid each job to achieve the desired profit level. You'll start saving time and money the very first time you use Design2Fab. Typical users experience an 80% reduction in both layout time and labor cost, compared to manual calculation.

## Commitment to service

MTC Software products are backed by the industry's best technical support, provided via company and channel partner specialists who are available to assist you using telephone, fax, email, and online support sessions. Our dedicated support team will make sure that you are up and running quickly, achieving operational readiness in as little time as possible.

We offer a Software Subscription program which includes one-on-one internet training sessions, unlimited technical support, and access to periodic version and update releases. The subscription program provides a cost effective way to get the most out of your investment in MTC Software.





# Design2Fab<sup>®</sup> 5

3D SHEET METAL DESIGN, LAYOUT, AND ESTIMATING SOFTWARE

## Version comparison chart

**J = Journeyman** provides automated flat pattern sheet metal layout, where no CNC plasma table is in use

**S = Estimator** is a comprehensive, easy-to-use estimating / costing system available for flat pattern sheet metal layout

**F = Foreman** provides automated flat pattern sheet metal layout with DXF output

**E = Enterprise** provides a fully integrated flat pattern sheet metal layout with DXF output and estimating / costing system

	J	S	F	E
Comprehensive library of shapes for pattern layout and fabrication	■	■	■	■
Patterns* – DXF pattern export into NestMaster™, TurboNest®, ProNest® or other software ready for automated nesting, cutting, and viewing			■	■
Patterns – Print and view	■		■	■
Pattern Fabrication Reports	■		■	■
Full-scale patterns to plotter/printer ready for cutting			■	■
Shear List – Blank sizes calculated	■		■	■
Labels – Production stickers with fabrication details	■		■	■
Shop standards fully customizable	■	■	■	■
Based on SMACNA standards	■	■	■	■
Fitting List – Quick list of fittings in job	■	■	■	■
Detail List – Shop ticket format shows fitting, details, and dimensions	■	■	■	■
ECalc – Calculator for quick trig, triangle, circle, and fraction math solutions	■	■	■	■
Metal Summary Report – Summary of total metal usage, including number of sheets, costs, and labor		■	■	■
Metal Piece Report – Details metal usage for each part		■	■	■
Cleat List – Lists cleats to fabricate and organizes them by type, size, etc.			■	■
Liner List – Lists lining to cut for fabricated parts by type, size, and dimension for each pattern piece		■	■	■
Wrap Report – Lists total wrap usage, costs, and labor		■	■	■
Vane Piece Report – Lists each part that has vanes, vane costs, and labor		■	■	■
Integrated comprehensive costing or estimating module		■		■
Job Cost Summary Report – Summary of total metal weight and cost; total costs for liner, wrap, sealant, stiffener, vanes, hangers, fabrication, markup; and grand total		■		■
Job Cost Itemized Report – Details for each part		■		■
Per piece and per pound/kilogram labor files, fully customizable		■		■
Job Cost Summary and Job Cost Itemized for additional materials, equipment, and supplies		■		■
Labor costs for additional materials, equipment, and supplies		■		■

\* If you're using CNC cutting machines, choose **Foreman** or **Enterprise** to export DXF files.



**MTC software<sup>®</sup>**  
POWER MADE SIMPLE<sup>®</sup>  
[www.mtc-software.com](http://www.mtc-software.com)

MTC Software, Power Made Simple, Design2Fab, TurboNest, ProNest, and Hypertherm are trademarks of Hypertherm, Inc. and may be registered in the United States and/or other countries. All other trademarks are the property of their respective owners. All rights reserved.

© 06/10 Hypertherm, Inc. Revision 2  
DS-D2FSNA

### Americas

**United States – Central Operations** [mtc@mtc-software.com](mailto:mtc@mtc-software.com) | +1 (716) 434-3755

**Canada** [mtcCA@mtc-software.com](mailto:mtcCA@mtc-software.com) | **Mexico** [mtcMX@mtc-software.com](mailto:mtcMX@mtc-software.com)

**Brazil** [mtcBR@mtc-software.com](mailto:mtcBR@mtc-software.com)

### Asia Pacific

**Singapore** [mtcSG@mtc-software.com](mailto:mtcSG@mtc-software.com) | **China** [mtcCN@mtc-software.com](mailto:mtcCN@mtc-software.com)

**Japan** [mtcJP@mtc-software.com](mailto:mtcJP@mtc-software.com) | **Australia** [mtcAU@mtc-software.com](mailto:mtcAU@mtc-software.com)

### Europe, Middle East, and Africa

**United Kingdom** [mtcUK@mtc-software.com](mailto:mtcUK@mtc-software.com) | **Netherlands** [mtcNL@mtc-software.com](mailto:mtcNL@mtc-software.com)