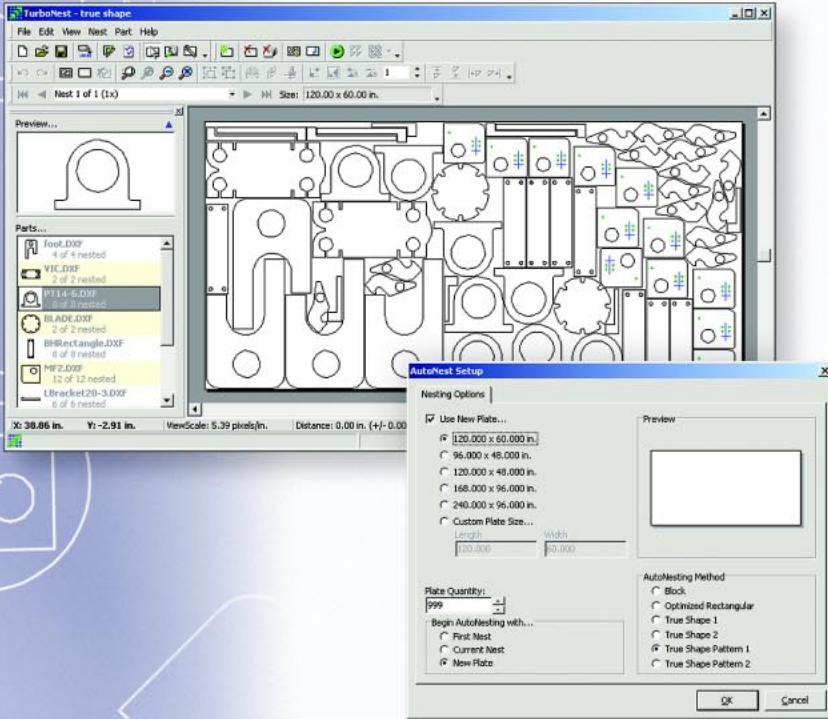


# TURBONEST® NESTING SYSTEMS

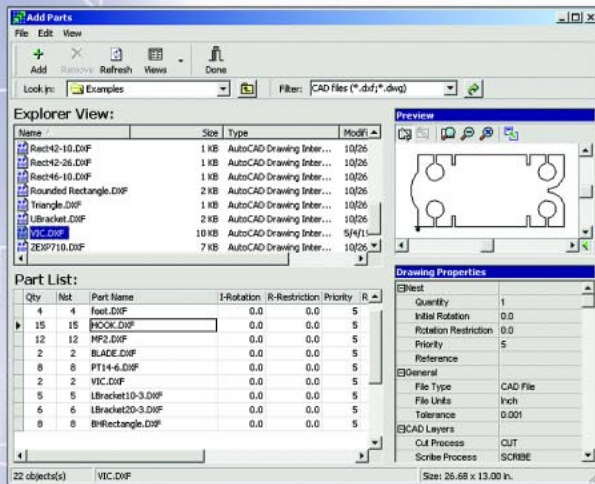


## Speed, Power and Affordability

As the name implies, TurboNest® delivers unsurpassed speed and power in a nesting system that is easy to learn and use. During the development of TurboNest®, careful attention was paid to every step of the nesting process to ensure that it is as simple and intuitive as possible. In addition, you will find that the interactive nesting features as well as the optional automatic nesting algorithms are the very best available, yielding unmatched speed and nesting efficiency. By keeping the focus on ease-of-use and including only the essential tools for productive nesting, MTC has been able to bring TurboNest® to the plate processing market at a very competitive price. Compare TurboNest® to any other nesting system; no other system delivers as much power and usability for such a low price!

## State-of-the Art User Interface

The TurboNest® user interface was designed to make the nesting process simple and intuitive. With floating or "dockable" toolbars and menus, you can configure the TurboNest® desktop to suit your individual preferences. "Fly by Help," context sensitive mouse cursors, and "drag and drop" nesting add up to a product that you can learn in minutes, not days! The TurboNest® reports provide clear and concise information for both management and production needs.



*TurboNest® is a nesting system specifically designed for 2-axis profile cutting applications like Plasma, Oxy-fuel, Laser, Waterjet and Routers. By combining the advanced interactive nesting and automated CAD import features of TurboNest® with automatic nesting options, you can build a nesting system that is right for you. To find out more about TurboNest® and how it can benefit your company, talk to your authorized MTC distributor or visit [www.TurboNest.com](http://www.TurboNest.com).*

## TurboNest® Speaks Your Language

TurboNest® is easily translated into nearly any language. The text for program screens, menus, reports, and help messages are contained in an external file, making the translation process simple and straightforward. TurboNest® supports Metric and English measurement units, and complies with regional locale settings for currency and decimal formats.

## Advanced Automatic Nesting Options

TurboNest® builds on its powerful, interactive nesting features by allowing you to choose the automatic nesting options to match your company's needs and budget. These options include *Pattern Arraying*, *Block Nesting*, *Optimized Rectangular Nesting*, *True Shape Nesting*, and *True Shape and Pattern Nesting*.



## TurboNest<sup>®</sup> Features and Options

### STANDARD FEATURES

- Automatic import of CNC and CAD geometry
- Support for cut, scribe, and point processes
- "Drag-and-drop" interactive nesting
- Part interference detection and "bumping"
- Ability to undo/redo part movement/rotation
- Fixed multi-torch support
- Interactive plate cropping
- Shop and management reports
- Automatic and interactive cut sequencing
- Automatic generation of optimized EIA/ESSI CNC program
- User-defined CNC formats
- Part clustering
- Interactive editing of lead in/out placement and style
- Part arraying
- Cost and production time estimates
- Multiple language support
- Full tool bar/menu customization
- Color scheme customization
- Basic Serial RS-232 DNC Download Capability

### OPTIONAL FEATURES

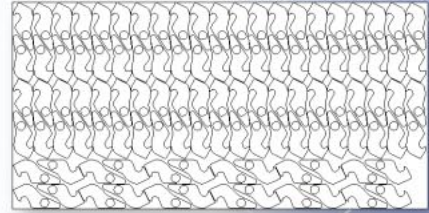
#### Automatic Nesting

- Pattern Arraying
- Block Nesting on rectangular plates
- Optimized Rectangular Nesting on rectangular plates
- True Shape Nesting
- True Shape and Pattern Nesting
- Nesting Combo Pack (includes all optional features listed above)

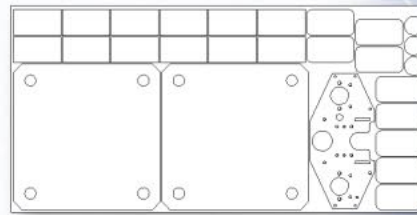
#### Productivity Tools

- Common-Line Cutting
- Chain Cutting
- Bridge Cutting

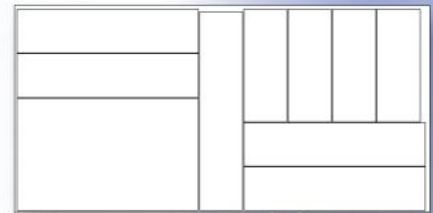
**Pattern Arraying**  
Employs advanced clustering and arraying technology to achieve impressive efficiency nesting parts or clusters



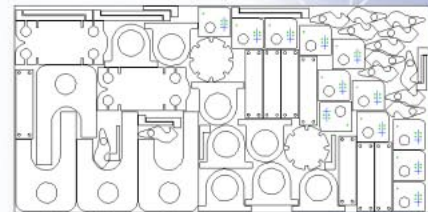
**Block Nesting**  
Adds simple, rectangular ("blank area") nesting for less demanding applications



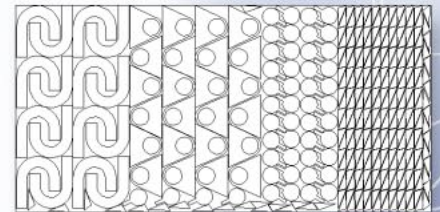
**Optimized Rectangular Nesting**  
Employs special algorithms for the nesting of parts that are primarily rectangular in shape, and in most cases achieves utilizations that are better than any other algorithm for these types of parts



**True Shape (or Profile) Nesting**  
An industry-leader in nesting speed and efficiency for the automatic nesting of parts of varying shapes and quantities



**True Shape and Pattern Nesting**  
Combines advanced arraying techniques with automatic true shape nesting to achieve unsurpassed nesting efficiency



## About MTC

MTC has been providing quality, innovative software products to the CNC plate cutting industry since 1984. Our software is used in a wide range of manufacturing and fabrication applications utilizing plasma, oxy-fuel, laser, water-jet, router and plasma-laser/punch cutting technology. By maintaining our focus on the plate cutting market we have been able to leverage our industry knowledge into a leadership position, serving an ever-expanding worldwide customer base. As PC and CNC technology has advanced, so too has the power and speed of MTC's software, but never at the expense of ease-of-use. No matter what the future holds, you can be sure that MTC will find innovative ways to apply the latest technology to make your company more productive.